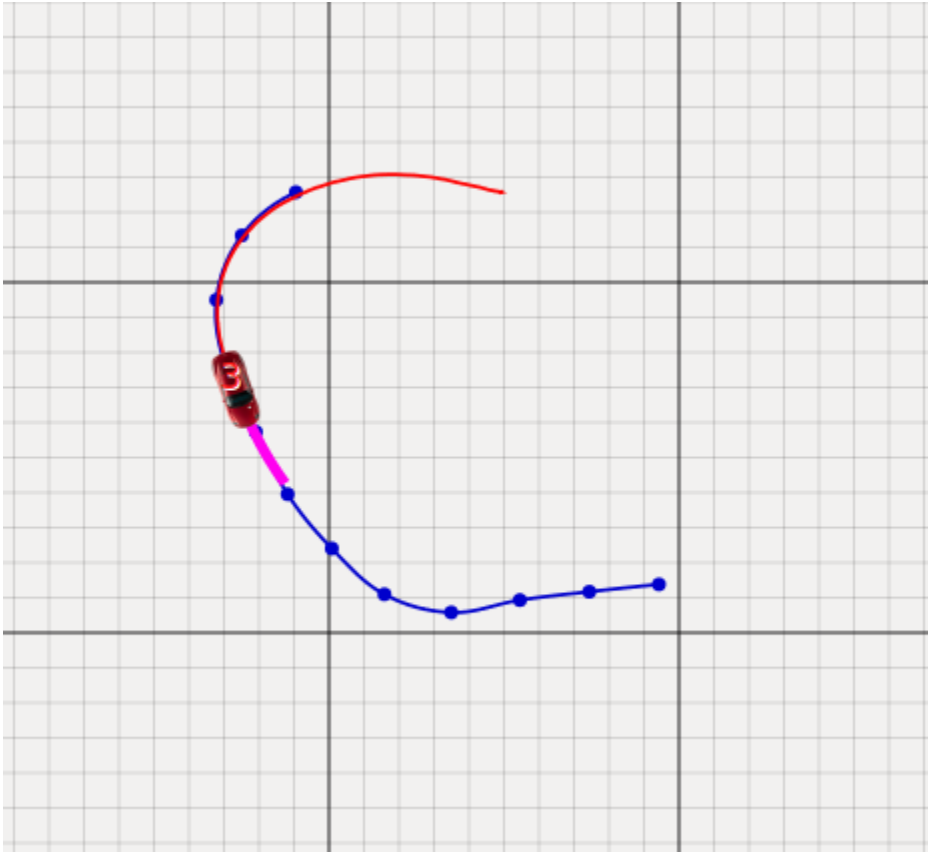


# Map View

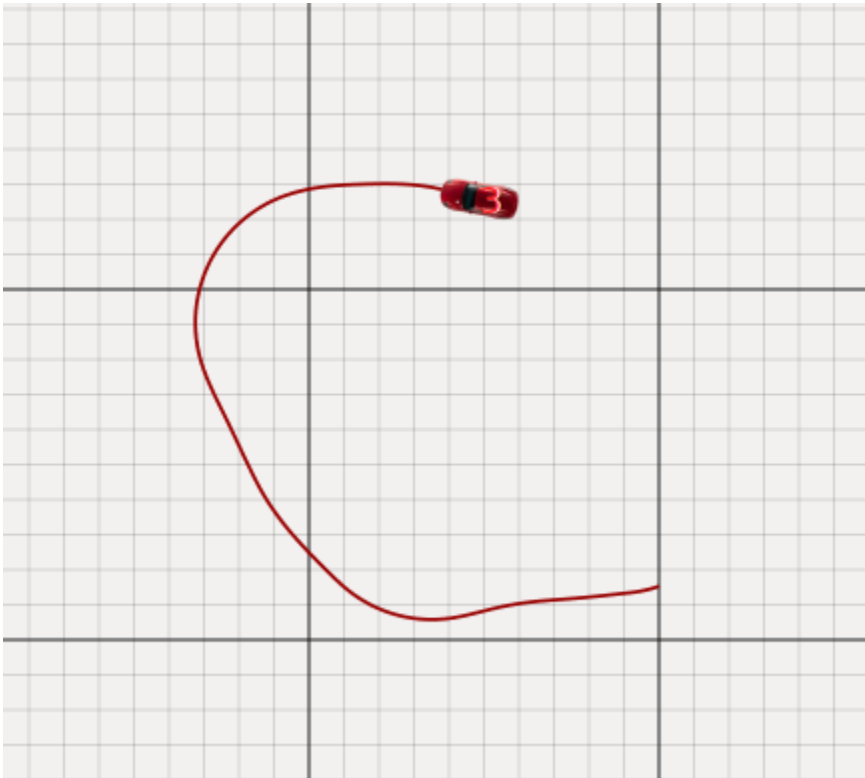
## Vehicle

The map on the upper left view depicts the vehicle's positions and orientations, a "trail" of past positions (red), the commanded reference trajectory (blue), and the MPC's predicted trajectory (pink).



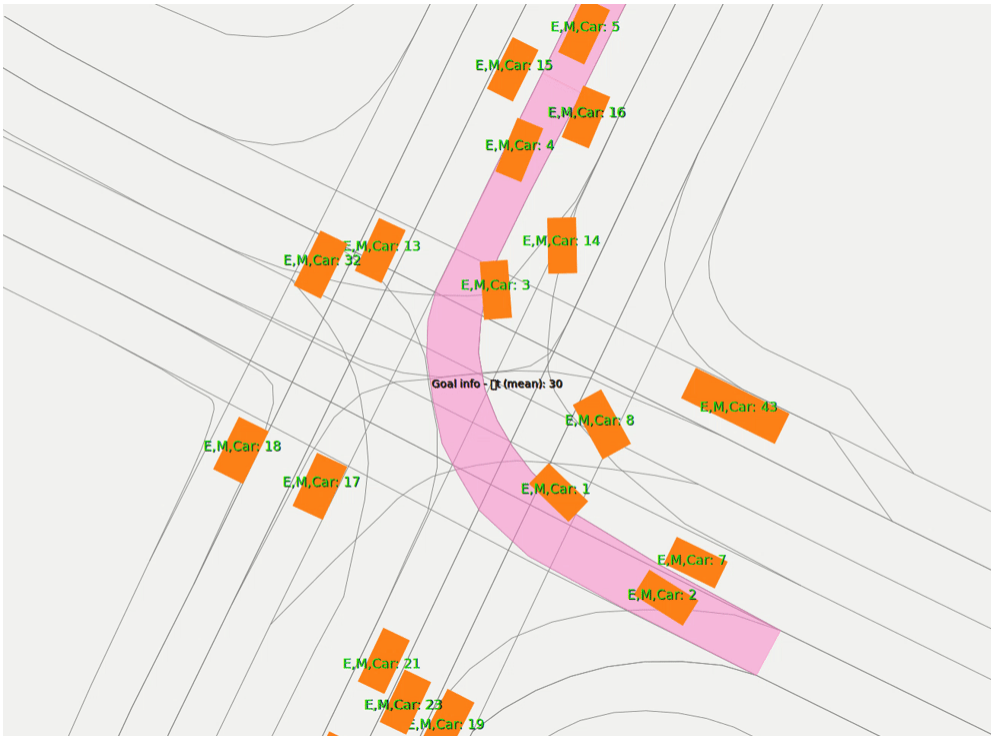
By sending [DDS visualization messages](#), elements can be dynamically added to the map view.

A vehicle can be controlled in a semi-automated fashion, by clicking and dragging to draw a reference trajectory. This only works when the vehicle is within the view of the IPS.



## Commonroad Scenario

The map can also show data of a loaded commonroad scenario - lanelets, obstacles etc. Some of the information are also shown in the [Commonroad Tab](#), which can also be used to load a specific scenario.



You can see an example of a simulation in the Gif shown above. Vehicle 4 was chosen to be represented by a real vehicle, so upon starting the scenario, the vehicle is replaced by a trajectory that is sent within the network. You can find out more about this in [Commonroad Tab](#).